



Branagh Court, Reading, RG30 2QZ

£175,000

Walmesley

## Branagh Court, , Reading, RG30 2QZ

Walmsley Estate Agency are pleased to offer to the market a very well presented spacious apartment with far reaching views. Positioned conveniently for Tilehurst and Reading train station this property has easy access to plenty of amenities as well as Reading centre. The generous accommodation is on the third floor and comprises; entrance hall, sitting/dining room, stunning kitchen, bedroom, refurbished bathroom and plenty of storage including private loft space. There is an allocated parking space and secure entry system. Viewing highly recommended.

Service charge £1940.52

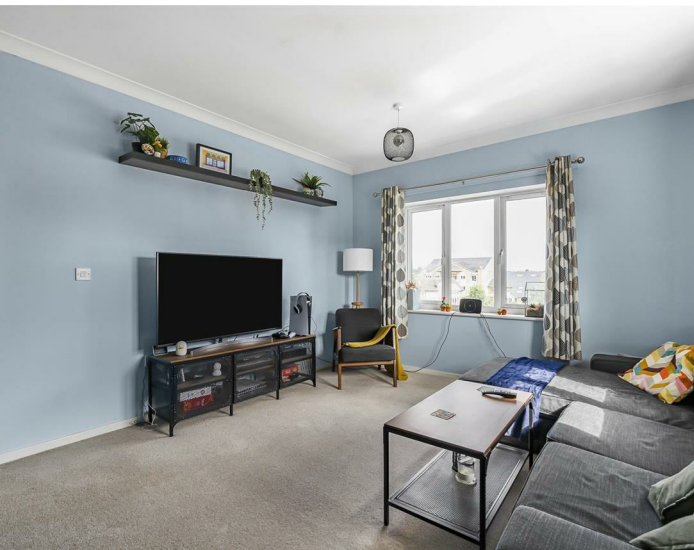
970 years left on Lease

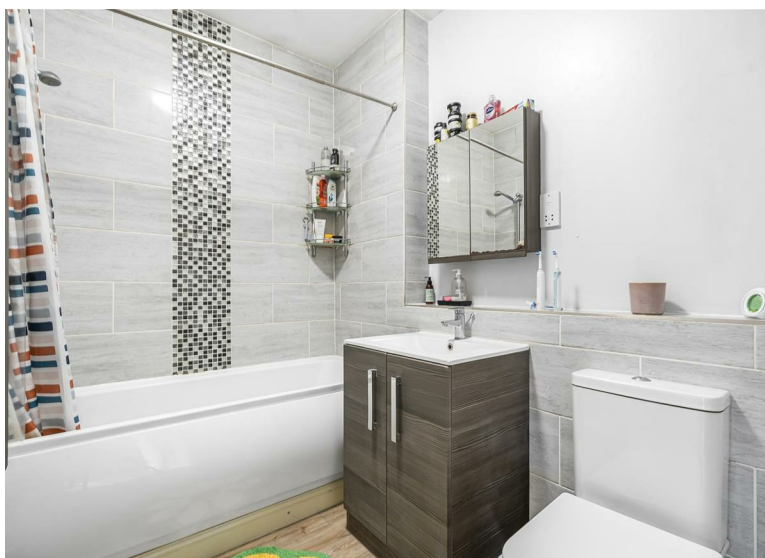
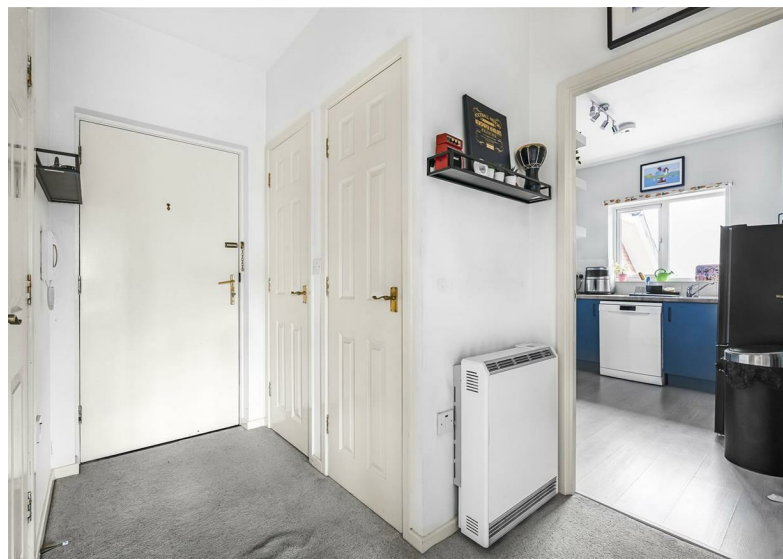
EPC Rating B

Council Tax band B

<https://moverly.com/sale/Gq63YM3HbFdLQHebaraEso/view>

## Tenure - Leasehold

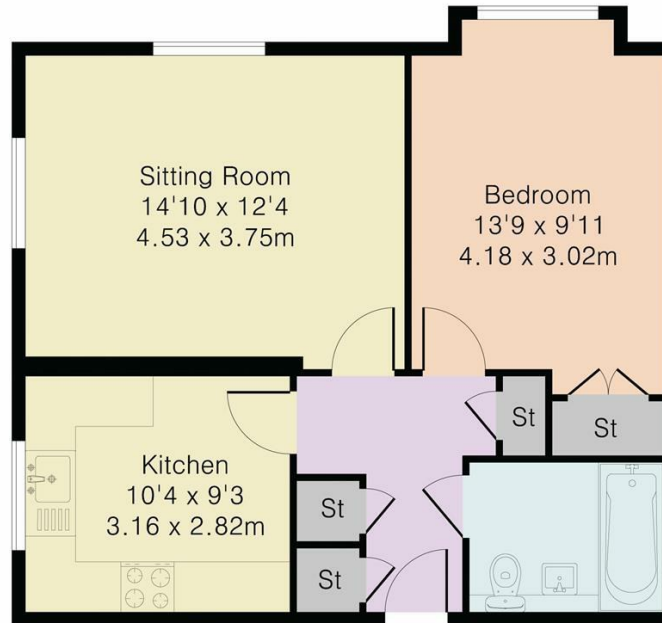




- Beautifully presented
- Generous accommodation
- Modern bathroom
- Walking distance to the station
- Allocated parking
- Elevated views
- Council Tax B
- EPC B



Approximate Gross Internal Area 555 sq ft – 52 sq m



Third Floor



Although Pink Plan Ltd ensures the highest level of accuracy, measurements of doors, windows and rooms are approximate and no responsibility is taken for error, omission or misstatement. These plans are for representation purposes only as defined by RICS code of measuring practice. No guarantee is given on total square footage of the property within this plan. The figure icon is for initial guidance only and should not be relied on as a basis of valuation.



Important: Walmsley Estate Agents would inform prospective purchasers that these sales particulars have been prepared as a general guide only. A detailed survey has not been carried out, nor the services, appliances and fittings tested. Room sizes should not be relied upon for furnishing purposes and are approximate. If floor plans are included, they are for guidance only and illustration purposes only and may not be to scale. If there are any important matters likely to affect your decision to buy, please contact us before viewing the property.

